

**HOW TO USE:** DO NOT apply when freezing weather is predicted. DO NOT apply when the air temperature is over 32°C. DO NOT apply within 2 weeks of an oil spray.

PLANT	DISEASE OR INSECT	RATE	HOW TO APPLY
Apples	Black Spot, Powdery Mildew	50ml per litre of water	During dormant to late bud swell period. DO NOT use on Delicious or Cox's Orange Pippin Apples.
Pears	Black Spot, Bryobia mite, Pear leaf blister mite		Spray whilst tree is dormant to bud swell stage.
Apricots, Almonds, Nectarines, Peaches, Plums, Prunes	Leaf Curl, Shot Hole, Freckle, Rust Brown Rot (Blossom Blight) San Jose Scale G.D., N.S.W., ACT, VIC, SA, TAS only		
Citrus	Frosted scale, G.D., VIC, SA, WA, TAS only White Louse Scale N.S.W., ACT, VIC, SA, TAS only White Louse Scale, Gld only	100 ml per litre of water 30 - 65 ml per litre of water	Winter spray. Apply in July and thoroughly wet all parts of the tree.
Grapes	Maori mite, N.S.W., ACT, VIC, SA, WA, TAS only Mites, VIC, SA, WA, TAS only	25 ml per litre of water 100 ml per litre of water	Summer spray - spray to thoroughly wet leaves. Apply as near as possible to budburst.
Roses, Hedges Tomatoes, Vegetables	Two Spotted Mite, Powdery Mildew, Rust Tomato Mite, Two Spotted Mite, Powdery Mildew, Rust	10 ml per litre of water	Apply in Spring, Summer, & Autumn. Spray to wet leaves and repeat as necessary.

**NOT TO BE USED FOR ANY PURPOSE OR IN ANY MANNER CONTRARY TO THIS LABEL UNLESS AUTHORISED UNDER APPROPRIATE LEGISLATION.**

**HOW TO PREPARE:**  
Shake contents well before using.

Add the required amount of product to the water and mix.

Use only when freshly mixed, do not store prepared spray.

**APPLICATION:**  
Spray in the cool of the day.

**CAUTION:**  
DO NOT allow chemical containers or spray to get into drains, sewers, streams or ponds.

**STORAGE AND DISPOSAL:**  
Store in the original container in a cool, dry place out of the reach of children. DO NOT store in direct sunlight. Dispose of empty container by wrapping in paper, placing in a plastic bag and putting in garbage.

**FIRST AID:**  
If poisoning occurs, contact a doctor or Poisons Information Centre (Phone 131126)

APVMA Approval No: 67859/56974

BATCH NO.: D.O.M:

**DISCLAIMER:**  
This product is designed to be used only for the purposes indicated on the label. Failure to use the product strictly as directed may be dangerous and cause injury, may be illegal, and may also render the product ineffective. The buyer or user is responsible for any misuses or negligence in the handling, storage, use of or disposal of this material. JC & AT Searle Pty Ltd will not accept any responsibility of any kind, whether for consequential loss or otherwise, in connection with the supply and use of the product other than those responsibilities mandatorily imposed by statutes applicable to the safety and supply of these goods.

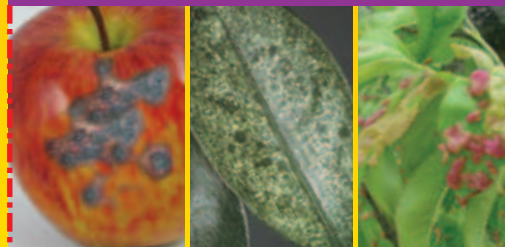
Magfactor 1.2  
BARCODE  
9315138062051

Searles®  
**Lime Sulphur**

Fungicide - Miticide - Insecticide

Searles®  
**Lime Sulphur**

Fungicide - Miticide - Insecticide



**ACTIVE CONSTITUENT:**  
200g/L SULPHUR (S) AS POLYSULPHIDE SULPHUR

**For the control of certain diseases, insects and mites on apples, pears, stone fruit, grapes, roses, hedges and vegetables in the home garden.**

**Contents 500mL**

Searles®

**For the control of certain diseases, insects and mites on apples, pears, stone fruit, grapes, roses, hedges and vegetables in the home garden.**



White louse scale

Two spotted mite

Black spot

Leaf curl

JC & AT Searle Pty Ltd  
4914 D'Aguiar Hwy,  
KILCOY QLD 4515  
ABN 14 002 898 893  
Phone: (07) 5422 3000  
Email: searleh@searle.com.au

[www.searles.com.au](http://www.searles.com.au)